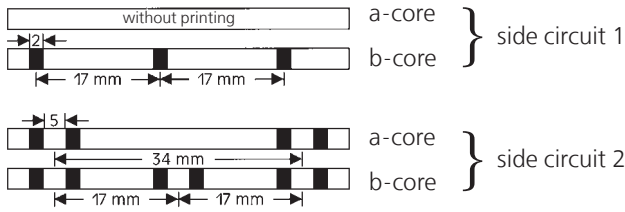


# ■ COLOUR CODE TELEPHONE OUTDOOR CABLE

## A-2Y(L)2Y...Bd and A-2YF(L)2Y...Bd

The Insulating coverings of single cores of a quad are to be marked with black rings:



The insulating cores of five star quads of a sub-unit must have the following colours:

- Quad 1: basic colours of all conductors red
- Quad 2: basic colours of all conductors green
- Quad 3: basic colours of all conductors grey
- Quad 4: basic colours of all conductors yellow
- Quad 5: basic colours of all conductors white

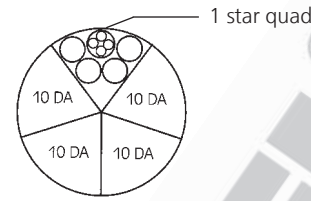
The first sub- or main-unit in each layer is to be marked by an open helix of plastic tape of red (marker). All other sub- or main-units must be whipped with an open helix of white or uncoloured plastic tape.

The quads of a sub-unit are to be counted according to the sequence of basic colours.

In cables with more than 5 star quads, the sub- and main-units must be counted continuously beginning with maker-unit at inner layer towards outside.

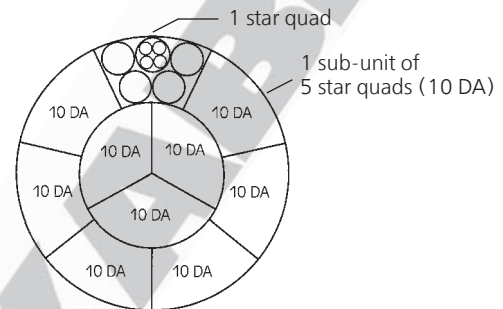
### Design of a main-unit:

Consist of 5 sub-units = 50 pairs (DA)



### Design of a main-unit:

Consist of 10 sub-units = 100 pairs (DA)



# ■ COLOUR ABBREVIATIONS ACCORDING TO VDE AND IEC

It is planned to use in future an uniform common colour abbreviations according to IEC 60757 (identical to CENELEC-harmonized document HD 457).

The following table shows the comparison of German and IEC colour abbreviations:

colour	German abbreviation		Abbreviation according to IEC 60757
	new	old	
black	SW	sw	BK
brown	BR	br	BN
red	RT	rt	RD
orange	OR	or	OG
yellow	GE	ge	YE
green	GN	gn	GN
blue	BL	bl	BU
violet	VI	vi	VT
grey	GR	gr	GY
white	WS	ws	WH
pink	RS	rs	PK
turquoise	TK	tk	TQ

IEC = International Electrotechnical Commission